



PRESS RELEASE

FOR IMMEDIATE RELEASE

October 6, 2020

Contact: Cris Worley, cris@crisworley.com
Cris Worley Fine Arts
1845 Levee St. #110
Dallas, TX 75207
214-745-1415

Exhibition Title: Robert Lansden: *Wheel of Time*

Exhibition Dates: October 10 - November 14, 2020

Cris Worley Fine Arts is pleased to announce our third solo exhibition of works on paper by gallery artist Robert Lansden. *Wheel of Time*, opens Saturday, October 10th, and will be on view through November 14th, 2020. An Open House will be held at the gallery Saturday, October 17th, from 12 – 4pm with a limit of 10 visitors in the gallery at a time. Appointments for the Open House are not required but are strongly encouraged.

Robert Lansden's synergetic drawings combine obsessive mark-making with meditative discipline. Each individual line is methodically rendered as a single step within a larger algorithm, resulting in geometric patterns that at first glance resemble digitally generated graphics. There is a warmth however, as the human hand is detected in each stroke of pencil, ink, gouache, or more recently, watercolor applied via calligraphy pen.

Wheel of Time features eight watercolor drawings that embody the infinite and cyclical nature of time. These radially composed works draw inspiration from ancient symbols, such as the Pagan Wheel of the Year, and the Buddhist Kalachakra Mandala, in which external cycles (such as the orbits of planets, seasons, and the zodiac) and internal cycles (such as systems within the human body, stages of life and circadian rhythm) are represented by outer and inner rings.

Lansden's fascination with time has been a recurring theme in previous works. In *Arranging Time*, 2017, interlocking geometry is symmetrically stacked, hinting at a cumulation of time, whereas *The Shape of Time*, 2015, series is defined by web-like patterns that give the illusion of warps in the fabric of space-time. Other titles such as *Surrender*, 2017, and *The Observed Moment*, 2017, suggest that despite time's perceived orientation, it is the act of being present that is most sacred.

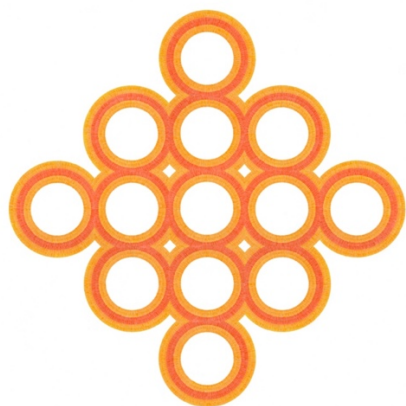
cris worley

FINE ARTS

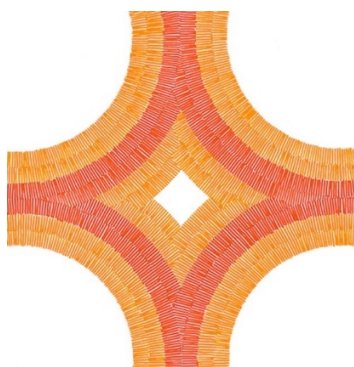
214/745-1415 | 1845 LEVEE STREET, SUITE 110 DALLAS, TEXAS 75207 | CRISWORLEY.COM

Robert Lansden lives and works in Norwalk, CT. He received his Bachelor of Fine Art from the Atlanta College of Art in 1989, a Master of Library Science from Palmer School of Library & Information Science in New York in 1999, and a Master of Fine Art from Tulane University in 2005. His work has been widely exhibited in galleries, universities, and museums including the Mobile Museum of Art in Mobile (AL), Nebraska Wesleyan University's Elder Gallery in Lincoln (NE), Nexus Center for Contemporary Art in Atlanta (GA), University of New Orleans's Ogden Museum of Southern Art (LA), and Kentler International Drawing Space in Brooklyn (NY).

ROBERT LANSDEN IMAGES (also attached separately to email):



Robert Lansden, *Wheel of Time 1*, 2020
watercolor on paper, 38h x 38w in



Robert Lansden, *Wheel of Time 1* (detail), 2020
watercolor on paper, 38h x 38w in